



## Protective Belt Cover Quick Setup Guide

### OVERVIEW

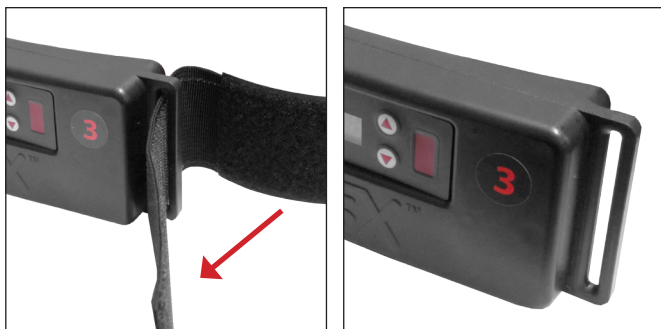
The Protective Belt Cover is designed to fit over the StressX PRO Belt. The cover performs several functions:

1. It protects the belt from wear and tear. Especially for role players who are constantly being pruned out for handcuffing.
2. It blocks the lights to ensure the role player cannot be easily located when conducting training in low light environments.
3. It has an easy access flap that still allows all the functions of the StressX PRO belt to be used even when the cover is on.



### INSTALLATION

- 1** Undo the velcro to remove the strap on the left side of the StressX PRO belt.



- 2** Place the Protective Belt Cover onto the front face of the StressX PRO Belt. Slip the strap holder of the StressX PRO Belt into the opening on the left side of the Protective Belt Cover.



- 3** On the right side of the Protective Belt Cover, attach the velcro (as shown in the picture) to secure the Protective Belt Cover in place.



- 4** Reinsert the strap of the StressX PRO Belt into the strap holder and re-attach the velcro that was undone in Step 1.



**Note:** When charging the StressX PRO Belt, there is no need to remove the Protective Belt Cover from the StressX PRO belt. Simply undo the velcro on the top-right side of the Protective Belt Cover to access the USB port on the StressX PRO Belt.