



Sight Lock

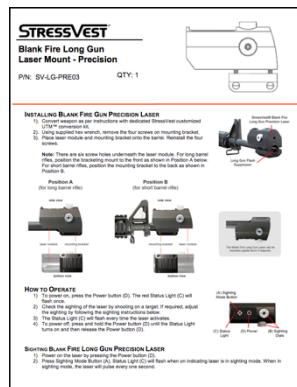
(For use with Long Gun Mount Lasers)

Use the Sight Lock to secure and prevent the Long Gun Laser Mount sighting dials from moving.



How to use the Sight Lock

Sight the Long Gun Mount Laser (refer to Blank Fire Long Gun Laser Mount Laser Manual).



Once the laser is sighted, place the Sight Lock over the sighting dials to secure them in place (refer to the pictures below). Be careful not to move the sighting dials while placing the Sight Lock.



Remove the Sight Lock if you need to re-adjust the sighting. Ensure the Sight Lock is securely placed back over the sighting dials once sighting had been adjusted.