

STRESSVEST[®]

ARM SHOCKER

OPERATING & MAINTENANCE MANUAL

SV-ARM



Before using or operating the StressVest[®] Arm Shocker, please read this manual thoroughly, and retain it for future reference.

TABLE OF CONTENTS

1. WARNINGS, CAUTIONS AND RISKS	3
2. LIABILITY RELEASE AND AGREEMENT NOT TO SUE	4
3. PARTS	5
4. PLACEMENT	6
5. HOW TO USE	7
5.1 Turning The StressVest® Arm Shocker On	7
5.2 Turning The StressVest® Arm Shocker Off	7
5.3 Pairing A Wireless Key Fob To The StressVest® Arm Shocker	8
5.4 Unpairing A Wireless Key Fob From The StressVest® Arm Shocker	8
5.5 Arming & Disarming	9
5.6 Changing The Shock Level.....	9
5.7 Activation.....	10
5.8 Connecting To The StressVest.....	11
5.9 Using With The StressVest®	13
5.10 Changing The Batteries	13
6. StressVest® ARM SHOCKER WARRANTY TERMS AND CONDITIONS	14

1. WARNINGS, CAUTIONS AND RISKS

WARNING: MUST READ!

It is the responsibility of the purchaser of the StressVest® Arm Shocker product to ensure that any individual wishing to train with said product first read and agree to the conditions stated in this form.

ALL PURCHASERS AND USERS OF STRESSVEST® ARM SHOCKER ELECTRICAL DISCHARGE DEVICES MUST READ AND AGREE WITH THE FOLLOWING CONDITIONS PRIOR TO USING ANY STRESSVEST® PRODUCTS. IF YOU DO NOT AGREE WITH THE CONDITIONS SET OUT IN THIS FORM, PLEASE RETURN THE UNUSED STRESSVEST® ARM SHOCKER PRODUCT FOR A FULL REFUND BEFORE USE.

Any Instructor wishing to use a StressVest® Arm Shocker product as a tool to assist in training other individuals MUST ensure all students read and understand warnings, cautions and risks associated with StressVest® Arm Shocker.

1. StressVest® Arm Shocker electrical shocking devices are designed to be used as a training tool only. Although they are not designed to cause serious injury or incapacitation, the fact that they emit an electrical shock means they do carry risk. It is impossible to predict how each individual will react to the device. While medical evidence supports the use of high voltage, low amperage devices as being safe, those choosing to train with StressVest® Arm Shocker products accept risk of injury or even possible death from unforeseen individual susceptibilities.
2. StressVest® Arm Shocker devices can cause muscle contractions or reflex reactions which may result in injuries to bones, muscles, tendons, ligaments and joints.
3. StressVest® Arm Shocker devices cause both physical and psychological pain which can be stressful and may cause psychological injury in some people.
4. Repeated exposure with the StressVest® Arm Shocker device in the same location may cause redness, marks, burning and in extreme cases, scarring that may be permanent.
5. Sparks from StressVest® Arm Shocker devices can ignite flammable liquid or gas. Do not use the StressVest® Arm Shocker around any flammable material. Ensure any inert or chemical spray products being used in conjunction with training are not flammable and can not be ignited by spark. This includes flammable gas products used to charge airsoft weapons.
6. The StressVest® Arm Shocker electrical charge should NEVER be applied to the groin, spine, upper torso, legs, face or neck area. NEVER touch the electrodes with the hands or fingers.
7. No minor or youths or anyone under the age of 18 years should be allowed to train with or be exposed to any StressVest® Arm Shocker devices.
8. If you have a condition or pre-existing injury that you believe may be aggravated by StressVest® Arm Shocker training, advise your instructor immediately and do not participate in StressVest® Arm Shocker device training.
9. Read all directions and associated cautions for any laser systems used in conjunction with the StressVest® Arm Shocker system.
10. NEVER touch the electrodes located on the shocker with your hands or fingers. Touching electrodes with different extremities can create a large pathway for an electrical charge to travel through the body and may put certain individuals at risk of bodily harm or even death.

2. LIABILITY RELEASE AND AGREEMENT NOT TO SUE

In consideration of using the StressVest® Arm Shocker device during training and/or exposure, I acknowledge and agree to the following:

1. I have read the above stated Warnings, Cautions and Risks Associated with StressVest® Arm Shocker products. I understand and acknowledge that my participation in any training utilizing a StressVest® Arm Shocker device or any exposure to a StressVest® Arm Shocker device is by volunteer only. I chose to voluntarily participate in StressVest® Arm Shocker device training and/or exposure, understanding that I assume all risks of bodily injury whether physical or psychological that may occur.
2. I acknowledge and intend this form to be legally binding upon me, my heirs, executors, employers or any other party of interest and I am acknowledging that I waive, release any instructor, monitor, agency, business, associated with StressVest® Arm Shocker device training including Setcan Corporation and all of it's sales agents, distributors, directors, owners and employees from any claims, demands, suits, rights and cause of action of any kind and nature, arising from and by reason of StressVest® Arm Shocker device training or exposure that results in any physical or psychological injury, including death.
3. I understand that by agreeing to this form I have read the entire form and have chosen to participate in StressVest® Arm Shocker device training and/or exposure; I understand that by reading this form I am releasing any instructor, monitor, agency, business, associated with StressVest® Arm Shocker device training including Setcan Corporation and all of it's sales agents, distributors, directors, owners and employees from any and all legal and civil action or claims; I understand that by reading this form I am agreeing and promising not to sue; I also understand that by agreeing with this form, I am giving up certain legal rights including the right to recover damages in case of injury; I agree that I have read and understand this entire Form; I understand that it is a promise not to sue and a release and indemnity for all claims; I further understand that by agreeing to this Form I am giving up certain legal rights including the right to recover damages in case of injury; and I agree to accept all the stated conditions and terms of this form.

IF YOU DO NOT AGREE TO THE ABOVE CONDITIONS, PLEASE RETURN THE UNUSED StressVest® Arm Shocker PRODUCT FOR A FULL REFUND. **IF THE StressVest® ARM SHOCKER PRODUCT IS NOT RETURNED UNUSED, THEN IT IS ASSUMED THAT THE PURCHASER HAS UNDERSTOOD AND AGREED WITH THE CONDITIONS OF THIS FORM.** PURCHASERS ARE ENCOURAGED TO HAVE THIS FORM REVIEWED BY AN ATTORNEY OF THEIR CHOOSING BEFORE AGREEING TO THE FORM.

3. PARTS

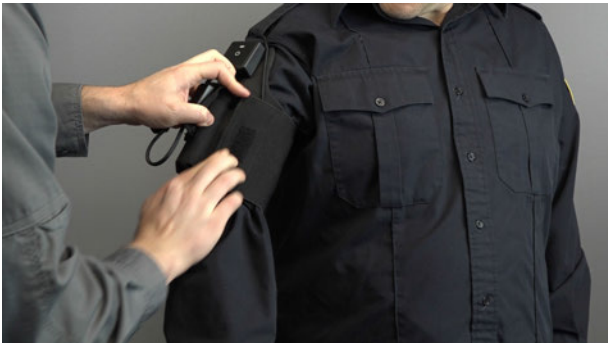


- 1. Control Module
- 2. Power Button
- 3. Status Light
- 4. Sensors
- 5. Epaulette Attachement

- 6. Battery Compartment
- 7. Bicep Strap
- 8. Wireless Key Fob
- 9. Middle Button
- 10. Left/Right Buttons

4. PLACEMENT

1. Use the Bicep Strap (7) to attach the StressVest® Arm Shocker to the upper bicep (over a single layer of clothing).



2. The Bicep Strap (7) should be tight enough that it does not move up or down on the arm, but should not restrict the range of motion.
3. The Epaulette Attachment (5) found on the top of the StressVest® Arm Shocker can be attached to the epaulette to prevent the StressVest® Arm Shocker from sliding down the arm.



4. When using the StressVest® Arm Shocker on the opposite arm move the Sensor (4) to the other velcro pad.



Right Arm

Left Arm



5. HOW TO USE

5.1 Turning The StressVest® Arm Shocker On

When the StressVest® Arm Shocker is off, press and hold the Power Button (2) until the Status Light (3) turns on, then release the Power Button (2). A blue blinking Status Light (3) indicates the StressVest® Arm Shocker is powered on and idle. The StressVest® Arm Shocker cannot be activated nor will it shock until it is armed (indicated by red blinking Status Light (3)).



5.2 Turning The StressVest® Arm Shocker Off

When the StressVest® Arm Shocker is idle press and hold the Power Button (2) until the Status Light (3) rapidly flashes red and blue. Release the Power Button (2) and the StressVest® Arm Shocker will power off.

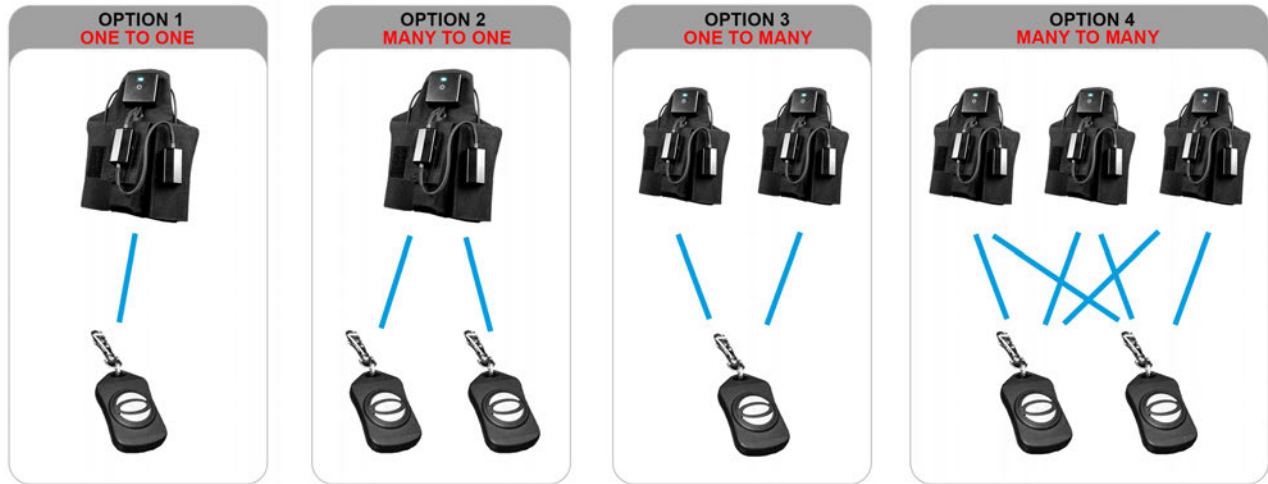


5.3 Pairing A Wireless Key Fob To The StressVest® Arm Shocker

1. While the StressVest® Arm Shocker is off.
2. Press and hold the Power Button (2) on the StressVest® Arm Shocker until the Status Light (3) flashes blue.
3. Release the Power Button (2) and the blue flashing light will turn solid blue.
4. Press any button on the Wireless Key Fob (8) to pair. The Status light (3) will stay solid blue for a few seconds (while in pairing mode) and then will turn off, indicating the pairing is successful.

NOTE: If pairing does not occur, repeat step 1. You can pair up to 60 Key Fobs to a StressVest® Arm Shocker.

Dynamic Key Fob Pairing Options



5.4 Unpairing A Wireless Key Fob From The StressVest® Arm Shocker

1. Make sure that the StressVest® Arm Shocker is off.
2. Press and hold the Power Button (3) on the StressVest® Arm Shocker until the Status light (2) flashes red.
3. Release the Power Button (3) and the Status light (2) will turn solid red for a couple seconds and then will automatically turn off when it is unpaired.

NOTE: This will unpair all Key Fobs (8) connected to a single StressVest® Arm Shocker.

5.5 Arming & Disarming

To Arm:

1. Once turned on, and the Status Light (3) is blinking blue, press the Power Button (2) once to arm. The Status Light (3) will change from blinking blue to blinking red to indicate the StressVest® Arm Shocker is now armed and will deliver a shock when activated.



To Disarm:

2. Press the Power Button (2) once or the Left/Right Buttons (10) on the Key Fob (8) to disarm. The Status Light (3) will change to blinking blue, to indicate the StressVest® Arm Shocker is disarmed and will not deliver a shock.



5.6 Changing The Shock Level

The StressVest® Arm Shocker can be set to deliver three different levels of pain penalty.

- **Shock Level 1 - Low**
- **Shock Level 2 - Medium**
- **Shock Level 3 - High**

The current shock level is shown by the blinking Status light (3) when armed or disarmed. **ONE blink for level 1, TWO blinks for level 2, and THREE blinks for level 3.**

The level can only be adjusted when the StressVest® Arm Shocker is disarmed, and the Status light (3) is blinking blue. Press the Power Button (2) two times in quick succession to change the shock level. The Status light (3) will briefly change to purple to show the level has been changed and the blink pattern on the Status light (3) will indicate the new level.

Each time the Power Button (2) is pressed two times in quick succession the shock level will increase up to level 3 and then return to level 1.

Once the desired Shock Level is selected, the StressVest® Arm Shocker can be armed by pressing the Power Button (2) once. The Status Light (3) will flash red to indicate it is now armed.

5.7 Activation

When the StressVest® Arm Shocker is armed it can be activated to deliver a shock in three different ways:

1. A hit is detected by the integrated Sensors (4)
2. A hit is detected by an attached StressVest®



3. The Middle Button (9) is pressed on the wireless Key Fob (8).

NOTE: If the Middle Button (9) on the wireless Key Fob (8) is held down it will continuously deliver shocks until it is released.



5.8 Connecting To The StressVest

The StressVest® Arm Shocker can be used as a stand alone unit, or can be integrated with a StressVest® by using the Y Adaptor.



1. Unplug the transmitter cable from the StressVest® transmitter, then open the inside of the back panel of the StressVest® to remove the entire cable hub.



Transmitter



Hub Transmitter Cable



Hub Transmitter Cable

2. Attach the Y Adaptor to the hub transmitter cable.



Y Adaptor

Hub Transmitter Cable

3. Place the cable hub back inside the StressVest® back panel and fish the Y Adaptor transmitter cable through the cable hole in the bottom of the StressVest® panel.



4. Attach the Y adaptor transmitter cable to the StressVest® transmitter.



5. Attach the Y Adaptor control module cable to the StressVest® Arm Shocker Control Module (1).



5.9 Using With The StressVest®

Once armed, the StressVest® Arm Shocker will be activated when the StressVest panel is hit with an IR laser. The StressVest® Arm Shocker can be disarmed and shocking will stop by pressing either the Power Button (2) on the StressVest® Arm Shocker or the left or right buttons on the wireless Key Fob (8).



5.10 Changing The Batteries

The StressVest® Arm Shocker is powered with four AA batteries. New batteries will last for at least 8 hours of training and deliver over 100 shocks. When the StressVest® Arm Shocker Battery is low the Status Light (3) will flash red.

1. Remove the Sensors (4) attached to the velcro on the arm band.
2. Open the velcro flap on the Battery Compartment (6).
3. Slide out the battery pack to access the four AA batteries.
4. Replace with four new AA batteries, slide the battery pack into the pouch and close the velcro flap.
5. Place the Sensors (4) back on the velcro pads as shown in the picture.



NOTE: It is important the the Sensors (4) are place correctly to receive proper hits from iR lasers.



Battery Pack



6. StressVest® ARM SHOCKER WARRANTY TERMS AND CONDITIONS

Who is Covered:

- This limited warranty ("warranty") is given only to the original end-use/retail purchaser (referred to in this warranty as "Original Purchaser") of the accompanying product, accessories (collectively referred to in the warranty as "this Product").
- If you purchase the Product from someone other than an authorized StressVest® reseller, or if the product was used (including but not limited to floor models or refurbished product) prior to your purchase, you are not the Original Purchaser and the Product that you purchased is not covered by this warranty.

What is Covered:

- This Product includes a StressVest® Arm Shocker.
- Except as otherwise provided herein, Setcan® warrants that the StressVest® Arm Shocker and the accompanying Accessory Items will be free from defects in material and workmanship, when used under normal use as defined in the written instructions that accompanied the product at time of purchase, provided that the disclosed defect is determined by Setcan Corporation to be Setcan's fault.
- The warranty applies only to products purchased and used in North America. For products purchased in, but used outside North America, this warranty covers only warranty service within North America (and does not include shipping outside North America).

What is the Length of the Warranty Periods:

- StressVest® Arm Shocker: one year from the original purchase date.
- Accompanying Accessory items: 90 days from the original purchase date.

What is Not Covered:

This warranty does not cover:

1. Physical damage to this Product;

2. Damage caused by improper or abnormal use, misuse, neglect or accidental (including but not limited to transporting this Product without the proper preparation and/or packaging);
3. Damage caused by any other training products not manufactured by Setcan Corporation;
4. Problems arising from other than defects in material and workmanship.

The limited warranty is void and Setcan shall not be responsible for any loss, damage or for any other liabilities arising from alterations, additions, adjustments or repairs which are made to the product by anyone other than authorized representatives of Setcan.

What to Do if You Think your Product is Eligible for Warranty Service:

To make a warranty claim, you must first verify that your StressVest® Arm Shocker® is within its active one year warranty period. To validate your warranty status, check the date on your original invoice.

What Setcan Will Ask You to Do to Receive Warranty Service:

Supply Setcan with a copy of your dated bill of sale showing that the Product was purchased within the United States or Canada. To register a claim, first obtain a Return Authorization ("RA") number within the warranty period from Setcan by mail, email info@setcan.com, or toll free telephone number at 1 866-353-5055. After contacting Setcan, you will be required to send the Product properly packaged, freight prepaid, to Setcan Corporation. Mail the defective StressVest® Arm Shocker with postage prepaid together with a photocopy of your bill of sale and written description of the defect to: Setcan Corporation, 1080 Kingsbury Ave, Winnipeg, Manitoba, Canada, R2P 1W5, Attn: Warranty Department. Please note the RA number on the outside of the package. Please provide your name, address, and phone number of where to return the repaired items. Failure to provide the required information may delay the return of the repaired items. You are responsible for the cost of shipping, packing the Product, and insurance (if you desire). You are also responsible for loss or damage to the Product in shipping.

What Setcan Will Do:

If the problem reported concerning your StressVest® Arm Shocker is covered by this warranty and if you first reported the problem to Setcan within the acceptable warranty period, Setcan sole responsibility will be to repair or replace the StressVest® Arm Shocker at no charge to you for parts or labor. The decision as to whether to repair or replace the StressVest® Arm Shocker is made by Setcan at their sole discretion. The repaired or replacement StressVest® Arm Shocker will be returned to you freight prepaid.

If the StressVest® Arm Shocker is not covered by this warranty you will be contacted and charged for shipping the StressVest® Arm Shocker back to you and charged for any service and/or replacement parts/products at Setcan's then current published rates after your written approval.

Limitations and Exclusions

Setcan is not responsible for damage to or loss of any equipment related to the use of this Product. Except for that repair or replacement as described above, Setcan shall not be liable for any direct, indirect, incidental or consequential damages or specific relief. Because some states do not allow the exclusion or limitation of consequential or incidental damages the above limitation may not apply to you.

THIS WARRANTY IS GIVEN IN LIEU OF ALL OTHER WARRANTIES, WRITTEN OR ORAL, WHETHER EXPRESSED BY AFFIRMATION, PROMISE, DESCRIPTION, DRAWING, MODEL OR SAMPLE. ANY AND ALL WARRANTIES OTHER THAN THIS ONE, WHETHER EXPRESS OR IMPLIED, INCLUDING IMPLIED WARRANTIES OF MERCHANTABILITY AND FITNESS FOR A PARTICULAR PURPOSE, ARE HEREBY DISCLAIMED. IF THE EXCLUSION OF IMPLIED WARRANTIES IS PROHIBITED BY STATE LAW, THEN ANY APPLICABLE IMPLIED WARRANTIES SHALL BE LIMITED TO THE DURATION OF THE EXPRESS WARRANTY DESCRIBED ABOVE AND OTHER PROVISIONS CONTAINED HEREIN.

- This Limited Warranty is the only warranty that Setcan is giving for this Product. It is the final expression and the exclusive and only statement of Setcan's obligations to you. It replaces all other agreements and understandings that you may have with Setcan or its representatives.
- This warranty gives you certain rights and you may also have other rights that vary from state to state.

The Limited Warranty (and Setcan's obligation to you) may not be changed in any way unless you and Setcan sign the same piece of paper in which we (1) refer to this Product and your bill of sale date, (2) describe the change to this warranty and (3) agree to make that change.

Release and Limitation of Remedies

PURCHASER AGREES TO ASSUME ALL RISKS OF LOSS AND AGREES TO RELEASE SETCAN FROM ANY AND ALL LIABILITY FOR ANY DAMAGES AND BODILY INJURY WHICH MAY RESULT FROM THE USE OR MISUSE OF THE PRODUCT BY THE PURCHASER OR ANY OTHER PERSON. SETCAN IS NOT LIABLE FOR THE FAILURE OF THE PRODUCT TO PERFORM AND SETCAN IS NOT LIABLE FOR ANY CLAIMS MADE BY A THIRD PARTY OR BY PURCHASER FOR OR ON BEHALF OF A THIRD PARTY. SETCAN'S CUMULATIVE LIABILITY TO ANY PARTY FOR ANY LOSS OR DAMAGES RESULTING FROM ANY CLAIMS, DEMANDS, OR ACTIONS ARISING OUT OF OR RELATING TO THIS PRODUCT SHALL NOT EXCEED THE PURCHASE PRICE PAID TO SETCAN FOR THE PRODUCT. IN NO EVENT WILL SETCAN BE LIABLE FOR ANY SPECIAL, INDIRECT, INCIDENTAL, EXEMPLARY OR CONSEQUENTIAL DAMAGES, HOWEVER CAUSED, WHETHER FOR BREACH OF WARRANTY, NEGLIGENCE, STRICT LIABILITY OR OTHERWISE, EVEN IF SETCAN HAS BEEN ADVISED OF THE POSSIBILITY OF SUCH DAMAGES OR IF SUCH DAMAGE COULD HAVE BEEN REASONABLY FORESEEN, AND NOTWITHSTANDING ANY FAILURE OF ESSENTIAL PURPOSE OF ANY EXCLUSIVE REMEDY PROVIDED HEREIN. SOME STATES DO NOT ALLOW FOR THE LIMITATION OR EXCLUSION OF LIABILITY FOR INCIDENTAL OR CONSEQUENTIAL

StressVest® Arm Shocker® is a registered trademark of Setcan® Corporation.

Patents: U.S, Canadian and International Patents Pending